



Apartment

Ryland Street, Birmingham

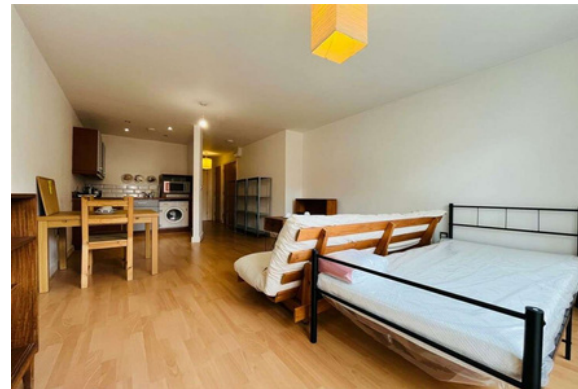
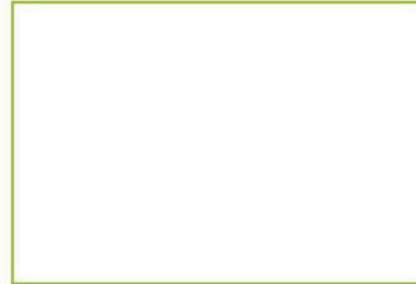
GP £120,000.00



TORCELLO  
PROPERTIES

## FLOOR PLAN & EPC RATING

# FLOOR PLAN TO COME



## AT A GLANCE



1



1



1

- Monthly Rent: £700pcm
- Market Values: £925cpm/£125,000
- Certs In Place: TBC
- Details of Arrears: TBC

## MATERIAL INFO

- Leasehold
- Years Remaining: TBC
- Ground Rent: TBC
- Service Charge: TBC
- EPC - C
- Council Tax - B
- Heating: TBC