



Block Of Flats Block Of Flats

Queens Street, Wolverhampton

MAKE ME AN OFFER!



TORCELLO
PROPERTIES



AT A GLANCE



11



11

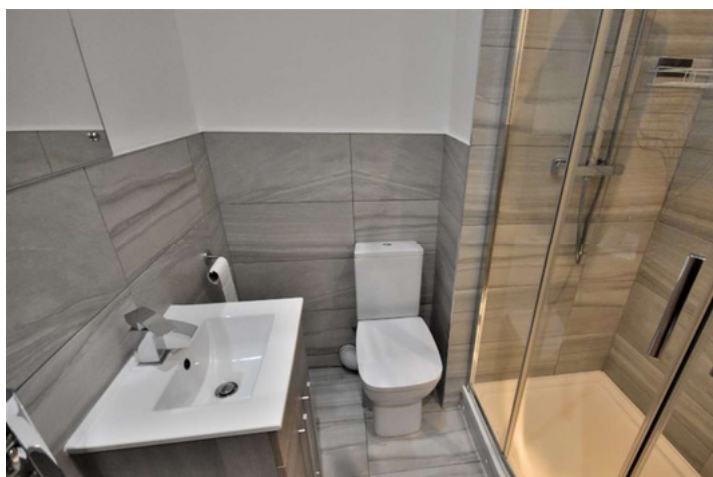


11

- No Upward Chain
- Sold with Freehold
- Planning Permission to Add 6 More Units
- City Centre Location

MATERIAL INFO

- Freehold
- EPC - TBC
- Council Tax – A
- Electric Heating
- Standard Construction Type
- Street Parking



DESCRIPTION

A block of 11 flats in the City Centre of Wolverhampton with plans to add an additional 6 units to the existing building. All flats are currently tenanted and bringing in a combined total income of £7,000 per month with scope for rents to be reviewed and increased.

All units are finished to a high standard throughout the building and limited street parking is available to tenants. All information provided, we have been advised by the seller and further due diligence is required. Any further information, please contact us.

MARKET VALUES:

Guide Price: £2,500,000

Rents Between: £650 - £850pcm

MATERIAL INFO:

Tenure: Freehold

EPC: TBC

Council Tax Band: A

Property Type: Block of Residential Flats

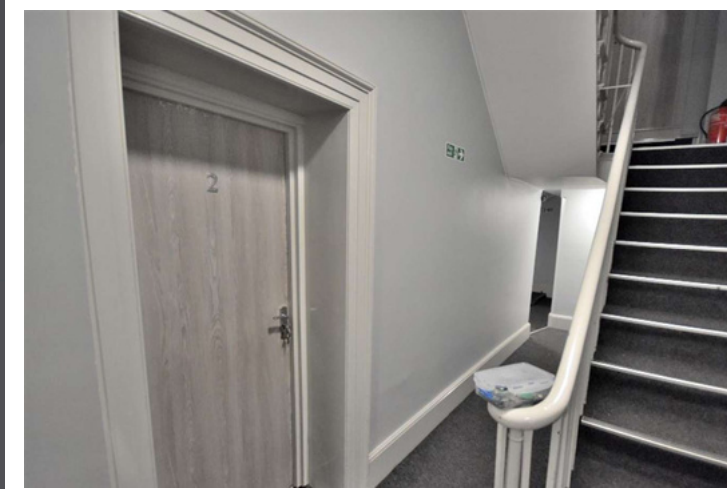
Heating Type: Electric

Parking: Street

Construction Type: Standard

Power/Water Supply: Mains

Other: N/A



FLOOR PLAN



NO	DESCRIPTION	DATE	CLASS
1	Proposed First & Second Floor Plan	Oct 20	
2		1:100@A3	
3			B

EPC RATING

TBC

For more information about this property, or to book a viewing – please contact the us today and speak with one of our team of experts!