



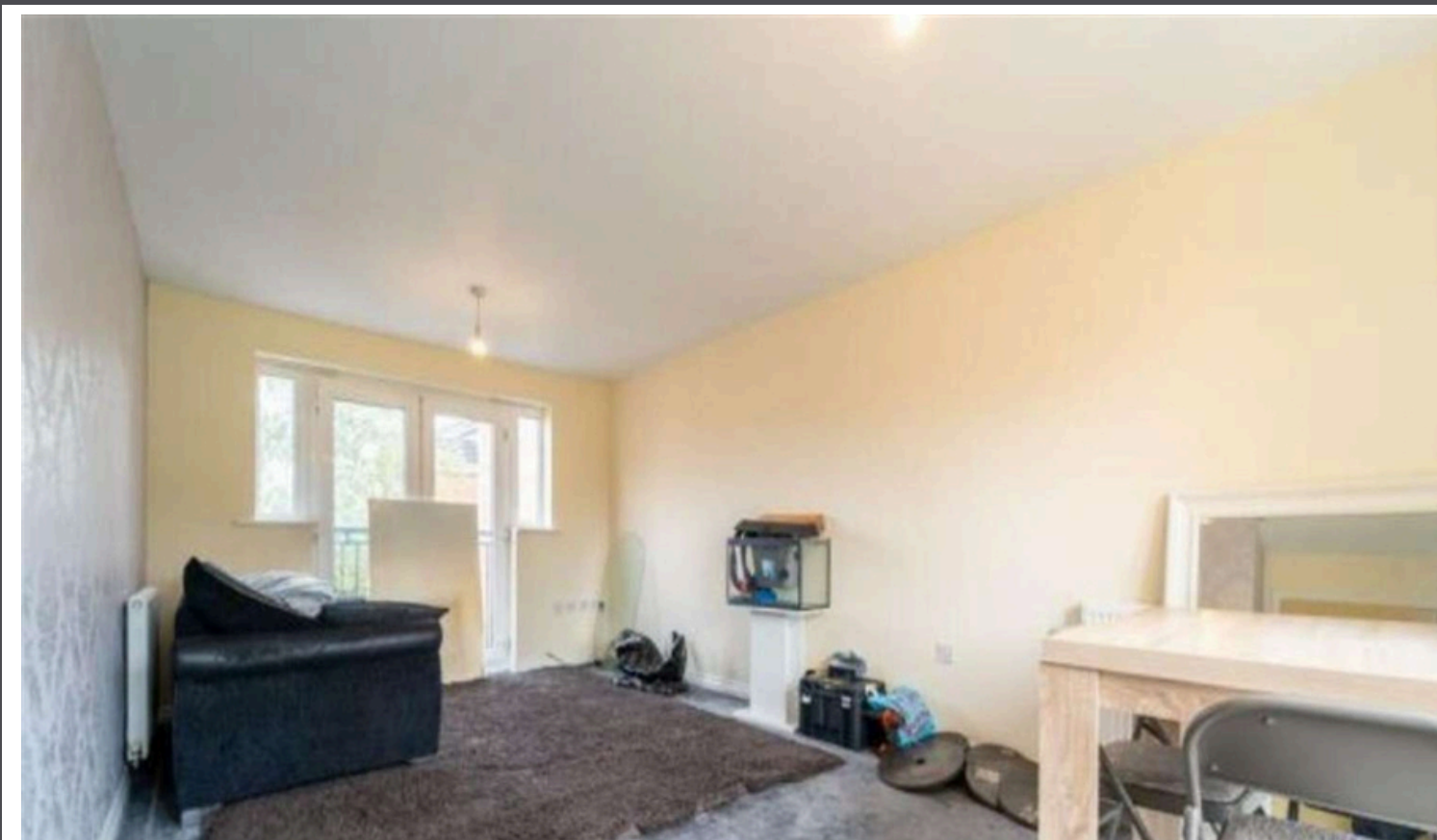
Flat

Harper Grove, Tipton

GP £115,000.00



TORCELLO
PROPERTIES



AT A GLANCE



2



1



1

- Investment Opportunity
- Popular Location
- Allocated Parking
- Well-Presented
- Good Transport Links

MATERIAL INFO

- Leasehold
- Years Remaining: TBC
- Service Charge: TBC
- Ground Rent: TBC
- EPC - C
- Council Tax - A
- Gas Central Heating



DESCRIPTION

OPPORTUNITY DETAILS:

A two-bedroom flat in the Tipton area with tenants currently in-situ and allocated parking.

MARKET VALUES:

Sales: £115,000

Rental Value: £900pcm

Comparables: <https://www.rightmove.co.uk/best-price-guide-report/f331d6f0-b92a-4916-89e2-8e766618acca>

CURRENT TENANCY INFO:

Monthly Rent: £850pcm

Certs In Place: TBC

Deposit: TBC

Deposit Protected: TBC

Details of Arrears: TBC

MATERIAL INFO:

Property Type: Flat

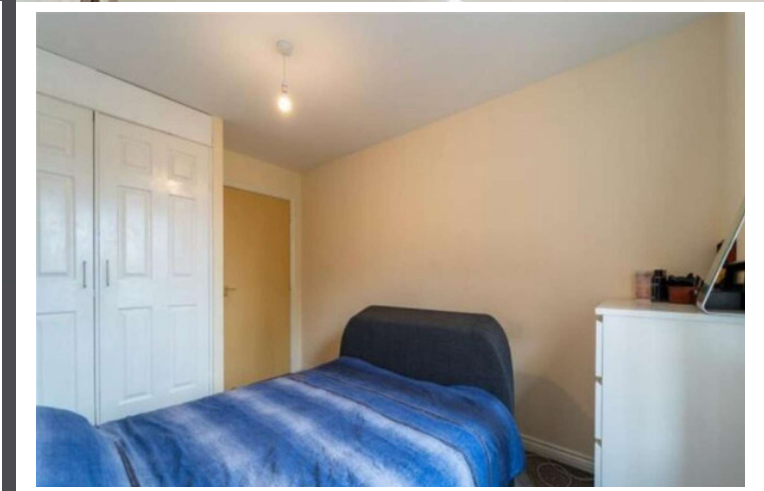
Heating Type: Gas

Parking: Allocated

Construction Type: Standard

Power/Water Supply: Mains

Other: N/A



FLOOR PLAN



EPC RATING

Score	Energy rating	Current	Potential
92+	A		
81-91	B		
69-80	C	78 C	79 C
55-68	D		
39-54	E		
21-38	F		
1-20	G		

For more information about this property, or to book a viewing – please contact us today and speak with one of our team of experts!