



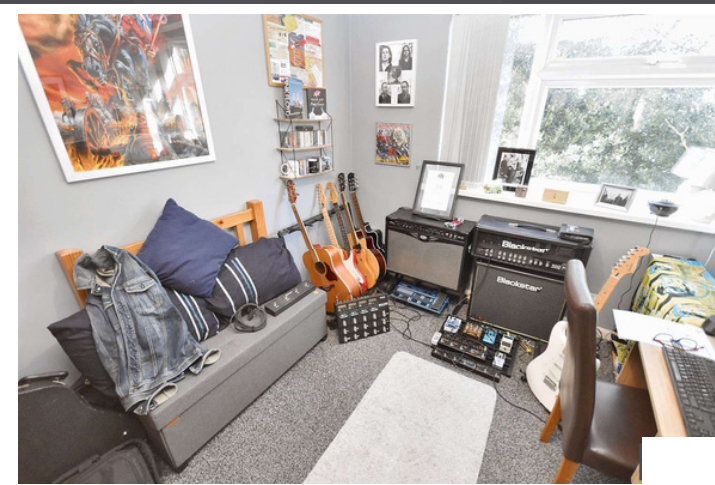
Flat

Yemscroft Flats, Walsall

[MAKE ME AN OFFER!](#)



TORCELLO
PROPERTIES



AT A GLANCE



2



1



1

- Tenant In Situ
- Certs: TBC
- CMV: £900pcm
- Excellent Location

MATERIAL INFO

- Leasehold
- Years Remaining: 81
- Ground Rent: £600
- Service Charge: £977
- EPC - C
- Council Tax - B
- Heating - Electric
- Parking - Off Road
- Standard Construction Type

DESCRIPTION

OPPORTUNITY DETAILS:

A two bedroom flat located in the Walsall area, complete with off road parking and a tenant in-situ.

MARKET VALUES:

Sales: £110,000

Rental Value: £900

Comparables: <https://www.rightmove.co.uk/best-price-guide-report/0975b3be-d5aa-4c6a-9479-8c1c703e333d>

CURRENT TENANCY INFO:

Monthly Rent: £570pcm

MATERIAL INFO:

Tenure: Leasehold

Years Remaining: 81

Ground Rent: £600

Service Charge: £977

EPC: C

Council Tax Band: B

Property Type: Flat

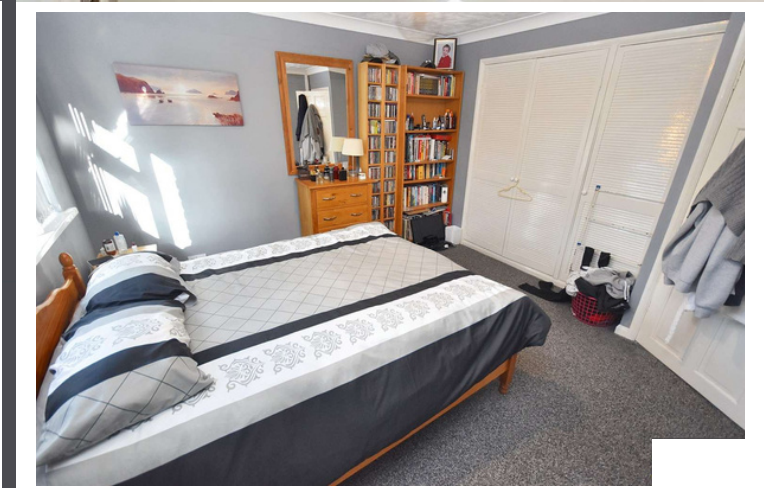
Heating Type: Electric

Parking: Off Road

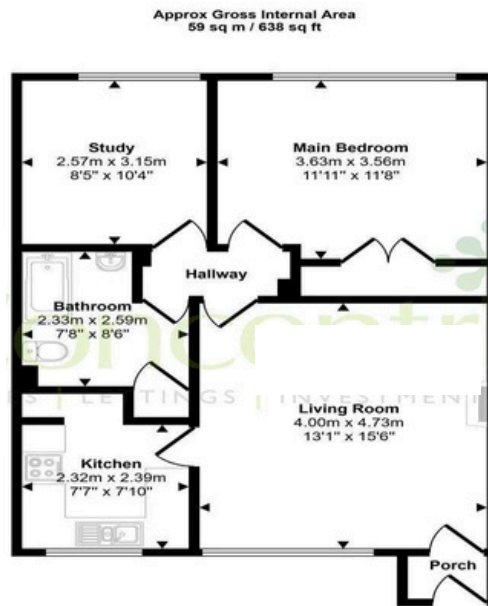
Construction Type: Standard

Power/Water Supply: Mains

Other: N/A



FLOOR PLAN



Floorplan

This floorplan is only for illustrative purposes and is not to scale. Measurements of rooms, doors, windows, and any items are approximate and no responsibility is taken for any error, omission or mis-statement. Icons of items such as bathroom suites are representations only and may not look like the real items. Made with Made Snappy 360.

EPC RATING

Score	Energy rating	Current	Potential
92+	A		
81-91	B		
69-80	C	79 C	80 C
55-68	D		
39-54	E		
21-38	F		
1-20	G		

For more information about this property, or to book a viewing – please contact the us today and speak with one of our team of experts!



Tel: 01746 219135
Email: info@torcello.co.uk

Mob: 07841 763554
Web: www.torcello.co.uk